

DATA SHEET

21-DUUAAE3S11-D6

LOW PIM OUTDOOR OMNI ANTENNA



Frequency: 806-894MHz

Gain: 10.5dBi

Power Rating: 250W

Connector: 4.3-10 Female

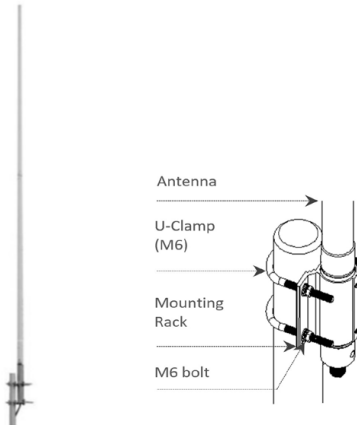
OVERVIEW

BRIDGE OMNI ANTENNAS are fully compatible with any Cellular, IoT, TETRA, WIFI, VHF and UHF network system. The antennas have a High-Band-Width 360° design and are made with high quality fiberglass and rugged elements, allowing the antennas to withstand outdoor environments.

KEY FEATURES

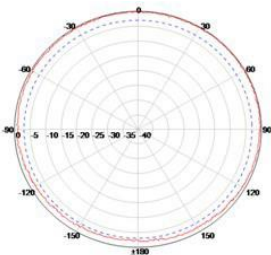
- N, Din and 4.3-10 connector are available upon request
- High gain and compact size
- Antennas have an IP protection rating of IP65 making them suitable for outdoor applications

Product Pictures

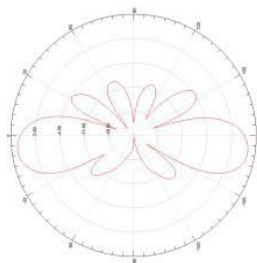


Radiation Diagrams

Horizontal plane pattern



Vertical plane pattern



TECHNICAL DATA

Electrical Specifications

Frequency Range (MHz)	806-894MHz
Gain	10.5±1dBi
VSWR	≤1.5
Polarization	Vertical
Beamwidth- H	360°
Beamwidth- V	8°
Power Rating	250W
Impedance	50Ω

Mechanical Specifications

Connector	4.3-10 Female, Bottom
Dimensions	Φ76x3200mm
Weight	9.5kg
Radome Color	White
Radome Material	Fiber-reinforced plastic

Environmental Specifications

Wind Load	60m/s
Temperature	-40°C~+65°C
Humidity	≤95%
IP Rating	IP65
Lightning Protection	DC Ground

Installation Specifications

Installation Method	Pole Mounting
Mounting Pole Diameter	Φ60- Φ100mm

Disclaimer All images are for reference purposes only

Revised: B.1.1

Important Notice: Information contained in this data sheet is believed to be reliable at the date of issue, accuracy and completeness is not guaranteed. Bridge Components holds the right to change the product specifications without notice.