



Frequency: 880-960MHz

Gain: 8±1dBi

Power Rating:100W

Connector: N-Female

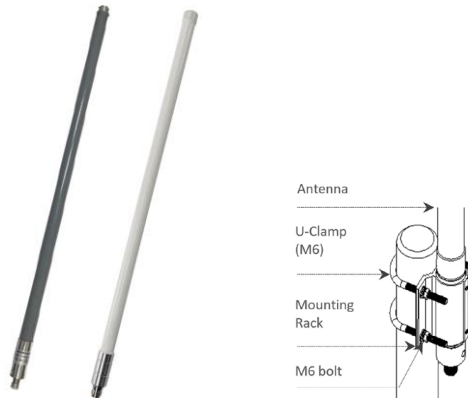
## OVERVIEW

BRIDGE OMNI ANTENNAS are fully compatible with any Cellular, IoT, TETRA, WIFI, VHF and UHF network system. The antennas have a High-Band-Width 360° design and are made with high quality fiberglass and rugged elements, allowing the antennas to withstand outdoor environments.

## KEY FEATURES

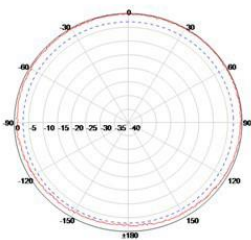
- N, Din and 4.3-10 connector are available upon request
- High gain and compact size
- Antennas have an IP protection rating of IP65 making them suitable for outdoor applications

### Product Pictures

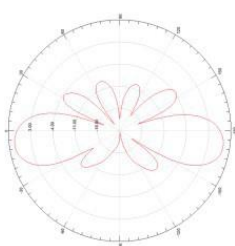


### Radiation Diagrams

Horizontal plane pattern



Vertical plane pattern



## TECHNICAL DATA

Electrical Specifications	
Frequency Range (MHz)	880-960MHz
Gain	8±1dBi
VSWR	≤1.5
Polarization	Vertical
Beamwidth- H	360°
Beamwidth- V	15±5°
Power Rating	100W
Impedance	50Ω

Mechanical Specifications	
Connector	N Female, Bottom
Dimensions	Φ52x1500mm
Weight	2.8kg
Radome Color	Gray/White/Black
Radome Material	Fiber-reinforced plastic

Environmental Specifications	
Wind Load	60m/s
Temperature	-30°C~+70°C
Humidity	≤95%
IP Rating	IP65
Lightning Protection	DC Ground

Installation Specifications	
Installation Method	Pole Mounting
Mounting Pole Diameter	Φ40- Φ80mm