



Frequency: 880-960MHz

Gain: 11.5±1dBi

Power Rating: 100W

Connector: DIN Female

OVERVIEW

BRIDGE OMNI ANTENNAS are fully compatible with any Cellular, IoT, TETRA, WIFI, VHF and UHF network system. The antennas have a High-Band-Width 360° design and are made with high quality fiberglass and rugged elements, allowing the antennas to withstand outdoor environments.

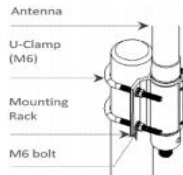
KEY FEATURES

- N, Din and 4.3-10 connector are available upon request
- High gain and compact size
- Antennas have an IP protection rating of IP65 making them suitable for outdoor applications

TECHNICAL DATA

Electrical Specifications	
Frequency Range (MHz)	880-960
Gain	11.5±1dBi
VSWR	≤1.5
Polarization	Vertical
Beamwidth- H	360°
Beamwidth- V	6°
Power Rating	100W
Impedance	50 Ω

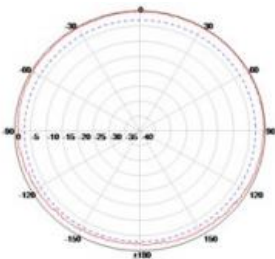
Product Pictures



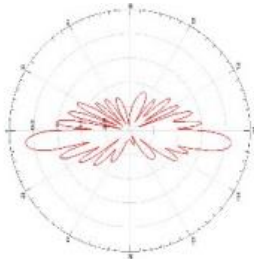
Mechanical Specifications	
Connector	DIN Female, Bottom
Dimensions	Ø52 x 3200mm
Weight	3.16kg
Radome Color	Gray/White/Black
Radome Material	Fiber-reinforced plastic

Radiation Diagrams

Horizontal plane pattern



Vertical plane pattern



Environmental Specifications	
Wind Load	60m/s
Temperature	-30 ~ +70 °C
Humidity	≤95%
IP Rating	TBD
Lightning Protection	DC Ground

Installation Specifications	
Installation Method	Pole Mounting
Mounting Pole Diameter	Φ40 – Φ80 mm