

## DATA SHEET

# 14-UUOXX6T-01

**Frequency:** 885-895MHz, 930-940MHz  
**Connectors:** DIN-Female/4.3-10 Female  
**Power Rating:** 100W

## FILTER

**IM3:**  $\leq$ -155 dBc

**Usage:** IP65 Indoor & Outdoor



## OVERVIEW

BRIDGE FILTERS pass frequencies within a certain range and rejects (attenuates) frequencies outside that range.

## KEY FEATURES

- Available with N, Din and 4.3-10 type connectors
- Compact, light weight and easy to install
- Wall or pole mounting
- Built-in lightning protection

## ORDERING INFORMATION

Part Numbers		
Connector Type	DIN Female	4.3-10 Female
	14-UUOCC6T-01	14-UUOEE6T-01

## TECHNICAL DATA

Electrical Specifications	
Frequency Range (MHz)	885-895/930-940
Insertion loss	$\leq$ 0.4 dB (930-935 MHz) $\leq$ 0.4 dB (935-940 MHz) $\leq$ 0.5 dB (890-895 MHz) $\leq$ 0.8 dB (886-887 MHz) $\leq$ 1.75 dB (885-890 MHz) $\leq$ 1.75 dB (885-886 MHz) $\leq$ 0.8 dB (886-887 MHz) $\leq$ 0.5 dB (888-895 MHz)
Out of band rejection	$\geq$ 50 dB (869-884 MHz)
VSWR/ Return loss	$\geq$ 20 dB
PIM : IM3	$\leq$ -155 dBc
DC/AISG by Pass	Pass
Power Rating	100W
Impedance	50 $\Omega$

Mechanical Specifications		
Dimensions	396x253x162 mm	396x253x162 mm
Weight	15.4kg	15.4kg
Color	Light Gray	

Disclaimer All images are for reference purposes only

Revised: | B.1.1

**Important Notice:** Information contained in this data sheet is believed to be reliable at the date of issue, accuracy and completeness is not guaranteed. Bridge Components holds the right to change the product specifications without notice.

DATA SHEET

# 14- UUOXX6T-01

**Frequency:** 885-895MHz, 930-940MHz  
**Connectors:** DIN-Female/4.3-10 Female  
**Power Rating:** 100W

## FILTER

**IM3:** < -155 dBc

**Usage:** IP65, Indoor & Outdoor



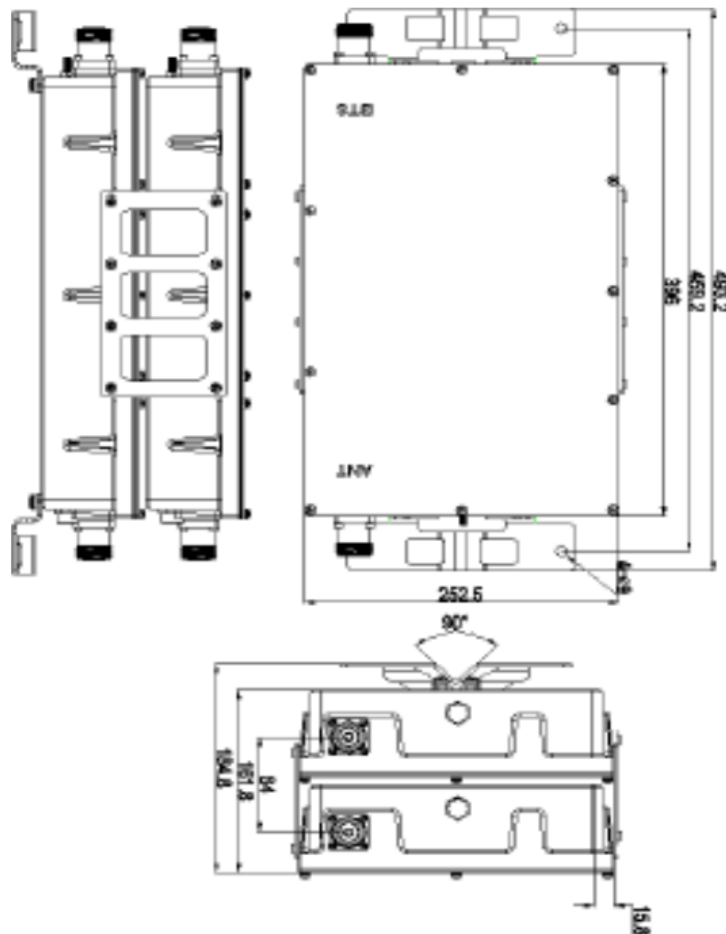
### Environmental Specifications

Temperature	0 ~ 55°C
Humidity	≤95%
IP Rating	IP65, Indoor & Outdoor

### Installation Specifications

Installation Method	Wall mounting
---------------------	---------------

### Product Pictures



Disclaimer All images are for reference purposes only

Revised: | B.1.1

**Important Notice:** Information contained in this data sheet is believed to be reliable at the date of issue, accuracy and completeness is not guaranteed. Bridge Components holds the right to change the product specifications without notice.