



Frequency: 420-5850MHz

Gain: 6/8/10 dBi

Power Rating: 100W

Connector: 6x SMA(Male/PG7)

## OVERVIEW

BRIDGE WIFI ANTENNAS are designed with custom working frequencies, connectors, beam degree angles and gains.

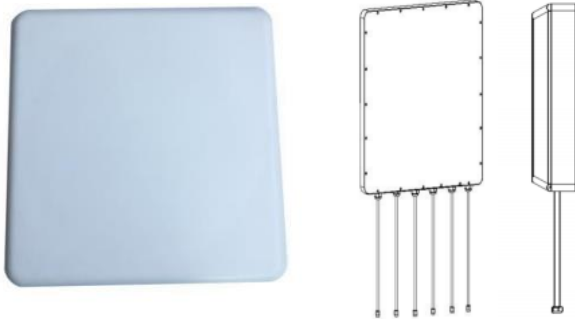
Rugged materials are used in the manufacturing process which allows the antennas to have a long working life and consistent performance.

## KEY FEATURES

- N, Din 4.3-10 connectors, available upon request
- Stable transmission performance
- High gain
- Supplied with mounting bracket, easy to install

Electrical Specifications	
Frequency Range (MHz)	(1) 420-450MHz (2) 902-928MHz (3) 1208-1280MHz (4) 1559-1610MHz (5) 2400-2485MHz (6) 5725-5850MHz
Gain	6.5±1 dBi (Frequency①) 8±1 dBi (Frequency②③④) 10±1 dBi (Frequency⑤⑥)
VSWR	≤2.2 (Frequency①) ≤1.8 (Frequency②③④⑤⑥)
Polarization	Vertical
Beamwidth- H	90±15° (Frequency①) 65±15° (Frequency②③④⑤⑥)
Beamwidth- V	65±10° (Frequency①) 35±8° (Frequency②③④⑤⑥)
Power Rating	100W
Impedance	50Ω

## Product Pictures



Mechanical Specifications	
Connectors	6 x 1m-RG141 cable/SMA Male&PG7
Dimensions	390 x 390 x 55mm
Weight	TBD
Radome Color	White
Radome Material	Fiber-Reinforced Plastic

## Radiation Diagrams

Horizontal plane pattern

Vertical plane pattern

Environmental Specifications	
Wind Load	60m/s
Temperature	-30°C ~+70°C
Humidity	≤95%
IP Rating	TBD
Lightning Protection	DC Ground

Installation Specifications	
Installation Method	Pole
Mounting Pole Diameter	Φ30-Φ50mm
Mechanical Tilt	0-10°

Disclaimer All images are for reference purposes only

Revised: A.1.1

**Important Notice:** Information contained in this data sheet is believed to be reliable at the date of issue, accuracy and completeness is not guaranteed. Bridge Components holds the right to change the product specifications without notice.