



Frequency: 698-960MHz

Gain: 14dBi

IM3: TBD

Power Rating: 50W

IP Rating: IP65

Connector: N(Female)

OVERVIEW

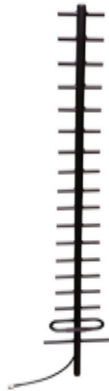
BRIDGE YAGI ANTENNAS are compatible with any Cellular, IoT, TETRA, WIFI, VHF and UHF network system.

The antennas are designed for highly directional narrow site applications. Custom working frequencies, connectors, beam degree angles and gains are available. Rugged materials are used in the manufacturing process which allows the antennas to have a long working life and consistent performance.

KEY FEATURES

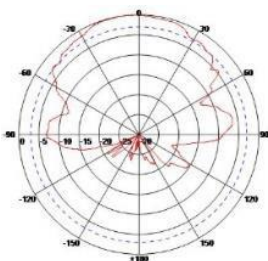
- N, Din 4.3-10 connectors, available upon request
- Optional qualified PIM performance
- Supports Wide-band working frequency ranges
- Supplied with mounting bracket
- Easy to install

Product Pictures

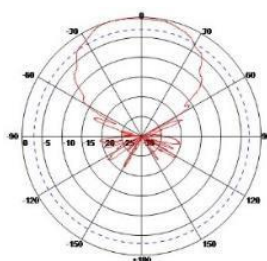


Radiation Diagrams

Horizontal plane pattern



Vertical plane pattern



TECHNICAL DATA

Electrical Specifications

Frequency Range (MHz)	698-960MHz
Gain	14dBi
VSWR	≤2.0
Polarization	≥17dB
Beamwidth- H	33°
Beamwidth- V	31°
Power Rating	50W
PIM : IM3	TBD
Impedance	50Ω

Mechanical Specifications

Connectors	1x N Female, Bottom
Feeder System	Jumper cable
Dimensions	1300 mm
Weight	1.5 kg
Color	Black
Material	Aluminum

Environmental Specifications

Wind Load	160m/s
Temperature	-40°C~+70°C
Humidity	≤95%
IP Rating	IP65
Lightning Protection	DC Ground

Installation Specifications

Installation Method	Pole Mounting
Mounting Pole Diameter	Φ35~ Φ50
Accessories	N/A