



Frequency: 1710-1880/1880-2170 MHz

Gain: 23/24dBi

Power Rating: 500W

Connector: 2 x DIN Female

OVERVIEW

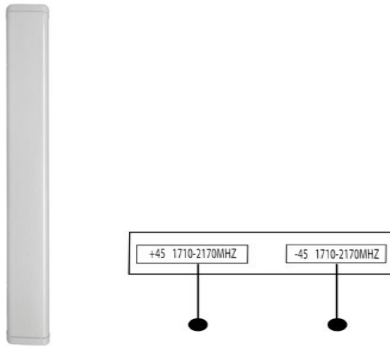
BRIDGE PANEL ANTENNAS are compatible with any Cellular, IoT, TETRA, WIFI, VHF and UHF network system.

The antennas are designed using narrow-beam technology and allowing them to generate highly directional radiation to distant sites. A combination of high-density elements and low-interference technology allows the antennas to occupy a narrow footprint while maintaining stable high-gain performance. Rugged materials are used in the manufacturing process, allowing the antennas to withstand outdoor environments.

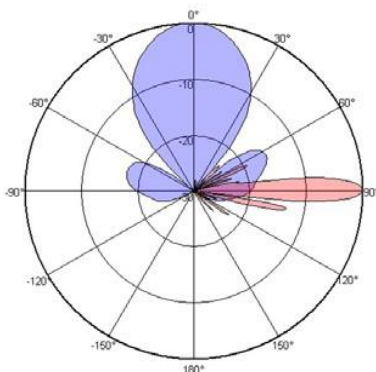
KEY FEATURES

- N, Din and 4.3-10 connector are available upon request
- Multiple gain and beam angle options available
- Antennas have an IP protection rating of IP65 making them suitable for outdoor applications

Product Pictures



Radiation Diagrams



TECHNICAL DATA

Electrical Specifications

Frequency Range (MHz)	1710-1880	1710-2170
Gain	23dBi	24dBi
VSWR	≤1.5	≤1.5
Polarization	±45°	±45°
Beamwidth- H	33°	33°
Beamwidth- V	4.6°	3.9°
Power Rating	500W	
Impedance	50Ω	

Mechanical Specifications

Connectors	2 x DIN Female
Dimensions	2100 x 280 x 125mm
Weight	21kg
Radome Color	White
Radome Material	PVC

Environmental Specifications

Wind Load	60m/s
Temperature	-40°C~65°C
Humidity	≤95%
IP Rating	IP65
Lightning Protection	DC Ground

Installation Specifications

Installation Method	Pole Mounting
Mounting Pole Diameter	TBD
Mechanical Tilt	0-10°